



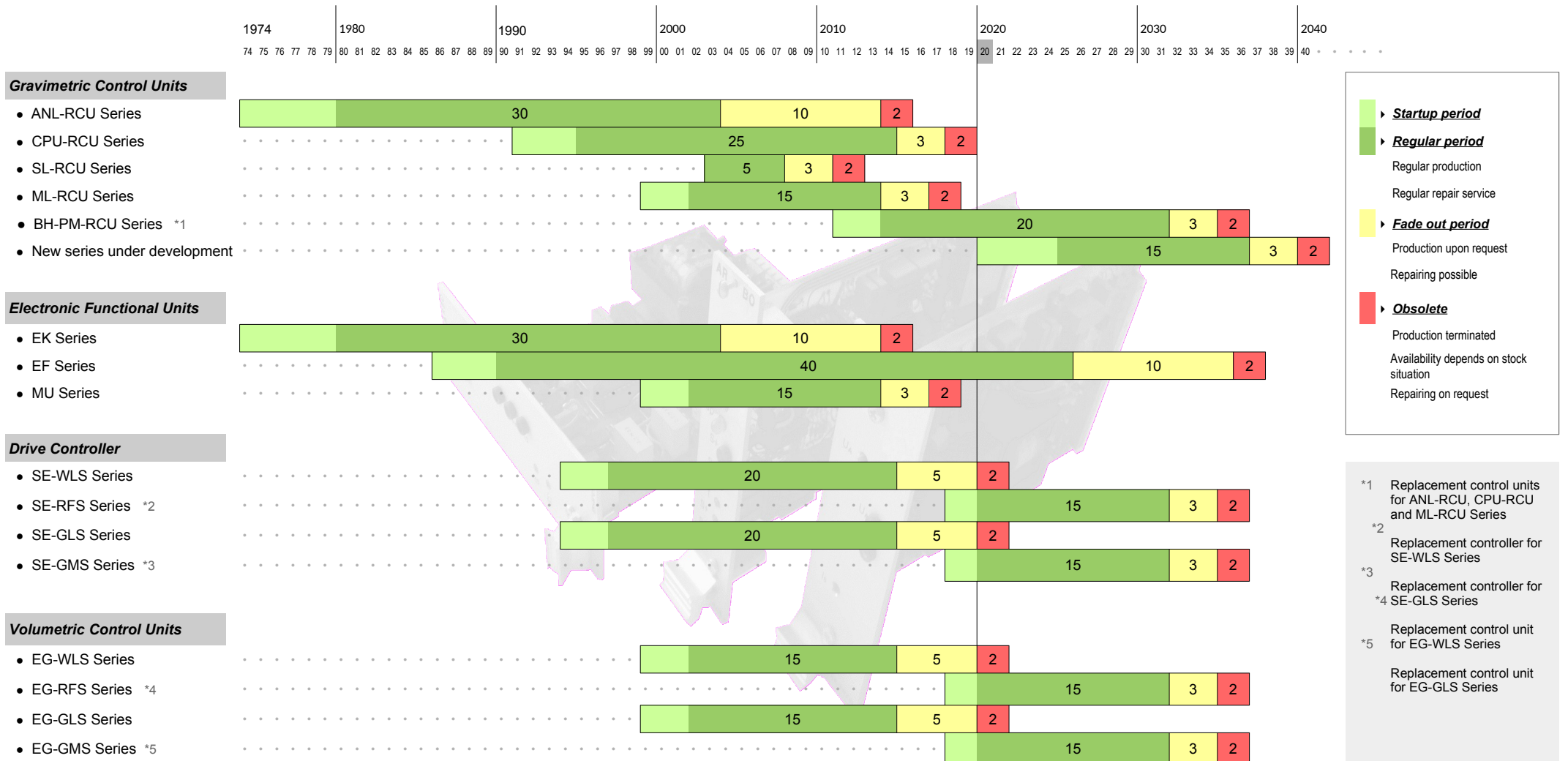
Lifespan electronic control system products & spare parts availability

Control units of ARBO Systems (Switzerland) have offered you exceptionally long reliable operation in industrial environments and granted spare parts availability.

However, we are constantly striving to improve our existing control and regulation products and develop new and innovative one. For this reason also our products have a limited production lifespan.

We kindly ask you to consult the diagram below for your equipment renovation or spare parts orders to keep your plant being productive.

Should raise any question do not hesitate to contact us. Together we will find the best solution for your specific plant.



- ▶ **Startup period**
- ▶ **Regular period**
 - Regular production
 - Regular repair service
- ▶ **Fade out period**
 - Production upon request
 - Repairing possible
- ▶ **Obsolete**
 - Production terminated
 - Availability depends on stock situation
 - Repairing on request

*1 Replacement control units for ANL-RCU, CPU-RCU and ML-RCU Series

*2 Replacement controller for SE-WLS Series

*3 Replacement controller for SE-GLS Series

*4 Replacement control unit for EG-WLS Series

*5 Replacement control unit for EG-GLS Series